



# Chair Detectives



Join Detective Zach and Emily on their search for Wycombe's chairs.



Wycombe is famous for this kind of chair. What is its name?

W \_ n d s \_ \_ \_ c h a i r



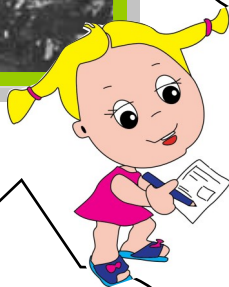
Find this machine. What part of the chair is being made?

.....  
.....



What famous person visited Wycombe in 1877 and was wowed by the chairs?

Q u \_ e n \_ \_ \_ c \_ \_ \_ r i a



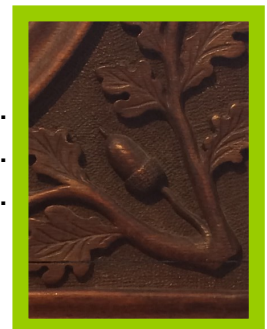
How many swans can you find on the chairs in the museum?

- 1
- 3
- 5
- 10



Can you find this chair?  
What important person sat on it?

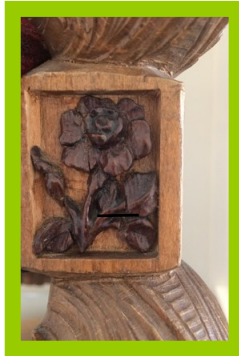
.....  
.....  
.....



Find the chairs and answer the questions.

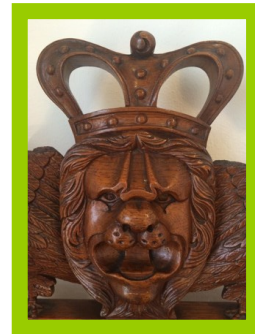
What event was this chair made for?

.....  
.....  
.....



Look at the decoration on this chair. What is the chair's name?

Ch\_\_pi\_\_  
Chair



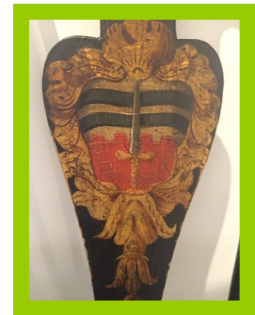
Where was this chair used?

.....  
.....  
.....



When was this chair made?

- About the 1900s
- About 1850s
- About 1740s



Find the child department chair. How would you sit on this chair?

- Still
- Relaxed
- Straight
- Careful



Find the Upside-Down Chair.  
Draw it here.



Can you find the World's Most Comfortable Chair?

Yes

Well Done Detectives!

